



## GOALS 目標

1. BECOME A FERVENT HOUSE OF PRAYER  
成爲一間熱切禱告的教會
2. NURTURE AND DEVELOP MANY MATURE  
AND EFFECTIVE SERVANTS OF CHRIST  
培育與裝備許多成熟有效的主僕
3. EFFECTIVE "EVERYBODY" EVANGELISM  
有效的動員每一位信徒去傳福音
4. HAVE VIBRANT AND MEANINGFUL WORSHIP  
有活力和有意義的敬拜
5. A LOVING AND GENUINE COMMUNITY  
成爲一個充滿愛心和真誠的群體
6. STRATEGIC GLOBAL MISSIONS IMPACT  
有影響力的宣教策略

## 中文主日實體/網上敬拜

### 洛城國語堂主日, 上午九時三刻

在讚美中敬拜

快樂崇拜; 神竟願愛我; 求主赦免

序樂/宣召  
陳雲海弟兄  
劉怡君執事  
程李家珏師母  
祈禱/榮耀頌  
蔣淙昕牧師

在禱告中敬拜  
在話語中敬拜  
在聆聽中敬拜

讀經: 提摩太後書 1:3-14  
信息: 「父子、師徒、同工」

三一頌/祝福/歡迎/報告

### 洛城粵語堂主日, 上午九時三刻

讚美/祈禱/奉獻

榮耀三一頌; 讚美永不息; 感恩祭燃起; 我要一生一世在你聖殿

歡迎/報告

讀經

約翰福音 15:1-8

信息

「與主連結- 成爲真門徒的關鍵」

回應詩歌: 住在你裡面

祝福

講員: 鄭會淦牧師

領會/領詩: 饒承宗執事

司琴: 鄭鄭志雯師母

### 蓋城國語堂主日, 上午十一時半

在宣召中敬拜

在讚美中敬拜

在禱告中敬拜

在話語中敬拜

在聆聽中敬拜

從亙古到永遠; 十架下我低頭  
獻詩: 「主啊, 我屬於你」- 國語詩班  
我永遠屬主

讀經: 創世記 24:7, 26-27  
信息: 「創世記中的基督(十):  
千里迢迢的引導」

三一頌/歡迎/報告

序樂/宣召  
朱崇文弟兄  
江明億弟兄  
蒲柯碧琴師母  
祈禱/榮耀頌  
趙明弟兄  
蒲介珉牧師

本月金句: 「我的羊聽我的聲音, 我也認識他們, 他們也跟隨我. 我賜給他們永生, 他們永不滅亡, 誰也不能把他們從我手裡奪去. 那位把羊群賜給我的父比一切都大, 也沒有人能把他們從我父的手裡奪去. 我與父原爲一。」  
約翰福音十章廿七至三十節 (引自新譯本)

## English In-Person/Online Sunday Worship Services

**Gaithersburg – English**

**10:00 AM**

Call to Worship Michael Lim

Singspiration Daniel Cheng

Message Pastor Hugo Cheng  
“Forewarned & Forearmed”  
- John 15:26-16:25

Outline: 1. Forewarned by Jesus 2. Forearmed by the Spirit

Benediction

Welcome & Announcements Michael Lim

**Rockville – English/Youth**

**11:20 AM**

Call to Worship Patrick Ho

Praise Singing

Message Minister Felix Chiu  
“A Love-Hate Relationship”  
- John 15:17-25

Closing Prayer

Welcome & Announcements Minister Felix Chiu

**Monthly Scripture:** “My sheep listen to my voice; I know them, and they follow me. I give them eternal life, and they shall never perish; no one can snatch them out of my hand. My Father, who has given them to me, is greater than all; no one can snatch them out of my Father’s hand. I and the Father are one.” John 10:27-30

## 教會動態

- 2025 教會通訊錄資料更新: 為經常到教會聚會而家庭資料有變動者 (如辭逝, 搬遷、嫁娶、新生兒等), 電子確認郵件將於 1/27 送出。
  - (1) 如您需更新資料, 可於教會網站下載 [www.cbcm.org](http://www.cbcm.org) → 資源寶庫 → 表單下載 → [教會「通訊錄」修訂資料表], 並電郵 [church.directory@cbcm.org](mailto:church.directory@cbcm.org), 或依照已寄給大家的電郵指示, 自行修改. 若 1/28 仍沒收到, 請聯絡教會辦公室 301-924-4855.
  - (2) 如您不在教會電郵清單但希望加入者, 請洽 [church.directory@cbcm.org](mailto:church.directory@cbcm.org). 截止日期為 2/16.
  - (3) 教會通訊錄將在網上或是使用手機應用程式 [iCBCM](#) 更新, 可透過密碼登入查看.
  - (4) 通訊錄預計 2 月底出版, 通訊錄上有名字的單位可拿到一本通訊錄.
- 歡迎新會員: 洛城英文堂- 甘國俊, George & Clotilde Thurman 夫婦
- 財政部: 於今天及下星期日分發 2024 年奉獻收據. 請敬拜後在洛城堂的會客室及蓋城堂領取.
- 關懷部: (1) 於 2025 年繼續每月向現有的組織提供捐款, 詳情請見附件. (2) 去年 11 月中旬至今, 本部共向經濟困難人士提供了 26,265 美元. (3) 本部收到消息稱, 有教會建築物在洛杉磯大火中被燒毀, 正在等待更多信息, 然後代表本教會向這些教會提供經濟援助. 如果您很想幫助這些受害者, 您可以向 SEND 國際組織正在合作的一家值得信賴的教會 Vintage Church 表達您的支持. 請點擊[此](#)查看詳情. (4) 我們收到了感謝電子郵件, 感謝教會向 Kristalaya Mercy Mission 的牧師 Jagannath Banerjee 捐贈 5,000 美元, 以幫助去年年底印度西孟加拉邦洪水中受困的信徒.
- 宣道部: 請預留時間 (1) 2025 年 3 月 2 日 2025 年是第一個全球焦點主日. 其他全球焦點主日為 6 月 1 日和 10 月 5 日. (2) 2025 年 3 月 22 日 - 宣教之旅參與者必須參加這培訓. (3) 2025 年宣教之旅: 注意事項 - 若計劃參與任何宣教之旅的兒童事工者, 必須在馬利蘭中華聖經教會有參與兒童事工的經驗. 請聯絡兒童事工部詢問服事機會. 申請截止日期: 出發前 3 個月. 更多細節將於稍後公佈! 請與 [MissionsTrip@cbcmgroups.org](mailto:MissionsTrip@cbcmgroups.org) 聯繫.

#	日期	目的地	需要人數	備註
1	4/15 至 4/29 10 月(日期待定)	德國維爾茨堡	4 月: 需要 2 位 (已足夠) 10 月: 待公佈	講道、教導、輔導、探訪、建立信徒和領袖
2	5/19 至 8/15	東亞	需要 2 位	初級英語班、美國和中國手語課、聾人文化和聾人教會信徒互動
3	6/1 至 6/15	吉爾吉斯斯坦	開放	大學生文化營
4	7/14 至 7/18	紐約布魯克林	最多 14 位	多加中心兒童暑期營 (Summer Splash). 團隊於 7/12 出發前往布魯克林參加說明會和兒童夏令營準備.
5	7/31 至 8/11	波蘭華沙	需要 6 位	團隊於 7/31 出發, 參加說明會和兒童夏令營準備.

6. 少年部: 冬令會的報名已截止. 感謝神總共有 91 位少年人及 33 位同工從本教會及 REM 教會報名參加. 退費及註冊轉換的要求的截止日期為 1/28. 因著營地有限的住宿名額, 恕不能接受遲來的報名. 如有任何問題請聯絡 [youth.retreats@cbcmgroups.org](mailto:youth.retreats@cbcmgroups.org).
7. 兒童部: 請預留時間並考慮加入以下的服事行列, 請聯絡 [children.dept.deacons@cbcm.org](mailto:children.dept.deacons@cbcm.org) 活動詳情請見後續通知:
  - 復活節「彩蛋尋獵」活動 (學步幼兒-11歲兒童)
    - 洛城堂: 4/12, 星期六下午
    - 蓋城堂: 4/19, 星期六下午
  - 兒童暑期聖經學校/中華聖經教會中文學校
    - 洛城堂 (4-11歲兒童): 6/20, 開幕典禮, 六時半至八時; 6/23-27, 兒童暑期聖經學校於上午 9-12 時半舉行. 中文學校將在下午舉辦夏令營.
    - 蓋城堂 (3-11歲兒童): 8/4-8, 上午 9-12 時半舉辦兒童暑期聖經學校, 下午沒有中文學校夏令營.

### 洛城中文堂 (國/粵語)

1. 國語堂主日早禱會: 上午 9 時, B03/05 課室.
2. 冬季國語堂主日學: 「約書亞記」、「約翰福音」、「救恩論」、「主日福音班」、「慕道班»: 上午 11 時半
3. 國語堂負責排桌椅: 十二至二月份, 請國語堂的弟兄姊妹於敬拜後在交誼廳幫忙排午餐桌椅.
4. 粵語堂主日早禱會: 上午 9 時在 B01 課室及網上, 聯繫梁鄭傳嬌姊妹 [rebecca.leung@cbcmgroups.org](mailto:rebecca.leung@cbcmgroups.org).
5. 冬季粵語堂主日學: 「末世忠僕傳主道-啓示錄品讀」、「人算甚麼 - 有關人與罪的教義」、「慕道班»: 上午 11 時半
6. 傳道部: 粵語堂 2025 年新一屆的幸福小組事工計劃於三月開始, 特別為有心志或有興趣參與幸福小組事工的弟兄姊妹開辦一堂實體的培訓課程, 探討幸福小組的基本概念及運作, 並繼續學習傳福音的技巧並要注意的事項. 日期是 2/1 上午 10 時在 B11/13 課室舉行, 詳情請向鄭會淦牧師 [vitus.cheng@cbcm.org](mailto:vitus.cheng@cbcm.org) 或李譚美英執事 [mei.ying.lee@cbcmgroups.org](mailto:mei.ying.lee@cbcmgroups.org) 查詢.
7. 粵語長者「喜樂團契」將於 2/2, 下午 12:45 在 B11/13 課室慶祝農曆新年. 喜迎新春, 備豐富午餐. 歡迎 60 歲或以上的長者踴躍參加, 請在敬拜後至交誼廳後面報名. 截止日期為 1/29. 如有任何疑問, 請聯絡 陳樹池弟兄 (Isaac Chan - 240-474-1989).

### 蓋城中文堂(電話 301-216-9598)

1. 晨禱: 週一至週五上午 8 時, 在網上, 一起學習用神的話語禱讀, 請聯繫蒲牧師 [christopher.poh@cbcm.org](mailto:christopher.poh@cbcm.org).
2. 冬季成人主日學: 「但以理書」、「慕道班»: 上午 10 時
3. 兒童部:



- (1) 幼兒至國小生: 週日上午 10 時, Room 224
- (2) 兒童主日學: 週日上午 11 時半, 幼兒班 Room 101, 幼稚園及學前班 Room 224, 國小一年級至五年級班 Room 226
4. 兒童及少年 Awana: 週五晚上七時半, 實體聚會.
5. 蓋城堂新年春節慶祝晚宴: 誠邀你和家人一同參與! 一起包餃子, 唱歌, 玩遊戲, 歡迎分享你的家鄉特色美食. 時間: 2/1 下午 4 時-9 時, 地址: 18757 N Frederick Ave, Gaithersburg, MD 20879. 聯絡: 張愛軍弟兄 [aijun.zhang@cbcmgroups.org](mailto:aijun.zhang@cbcmgroups.org).

## 2025 年 1 月 26 日國語堂主日福音慕道班

感謝主, 兩週前主日(1/12/2024) 福音班有 4 位(實體)慕道友, 慕道班也有 2 位慕道友出席. 傳福音是教會增長的第一線, 一個真正重生得救的基督徒, 傳福音是他(她)的責任、福份與感恩的回應. 如經上所記: 「報福音傳喜信的人, 他們的腳蹤何等佳美!」(羅 10:15). 請弟兄姊妹繼續為福音事工代禱, 積極的邀請親友, 鄰居, 同事來參加主日實體或網上的福音外展.

(1) 福音班 (11:25AM-12:30PM)

實體教室: B10 / Teams 教室: 每主日上午 11:25 AM [請點擊此處登入](#).

### 「衝破迷思, 接受真理」 - 講員: 佘明達弟兄

要相信基督的福音, 似乎不是一件容易的事, 因為在信仰的旅途中, 總有一些似乎是難以跨越的障礙. 這包括許多先入為主、或沒有經過認證考察的偏見或誤解. 您是否曾聽說過「信神等於是理性上的自殺. 信仰是非理性、反科學的」、「神的存在是信則有, 不信則無」、「宗教只不過是一種精神安慰」? 您是否願意進一步的探討和思考這類問題, 並期待能越過這些信仰上的障礙, 尋到那真理的亮光和永恆的生命? 請您來福音班一起探索尋求.

(2) 慕道班 (實體教室: B06, 11:30AM-12:30PM)

「基要真理答疑」(教師: 唐世朗弟兄) - 歡迎對真理要進一步問答者參加.

**Meetings this week 本週聚會: [www.cbcm.org](http://www.cbcm.org)**

### Wednesday 週三 1/29

- Rockville: Kindness Mandarin Women's Bible Study, 10 AM, online meeting  
洛城堂: 「恩慈國語婦女查經」, 上午十時, 網上聚會, 聯繫 [kindness@cbcmgroups.org](mailto:kindness@cbcmgroups.org)

### Thursday 週四 1/30

- Rockville: Community Center Activity, 10 AM, in Fellowship Hall

洛城堂:「社區中心活動」,上午十時,交誼廳,聯繫 [community.center@cbcmgroups.org](mailto:community.center@cbcmgroups.org)

講員:楊禎雄弟兄

(Following MCPS, if classes are delayed or suspended, all gatherings will be changed to online gatherings. 實體聚會若遇到天氣不良,按照蒙郡公立學校規定若延遲上課或停課,一律改成網上聚會.)

## **Friday 週五 1/31**

- Rockville: Teens Group – Winter Retreat (1/31-2/2)  
洛城堂:少年團契 - 「冬令會」
- Rockville: “Faithful and Young Mandarin YA Bible Study“ (7:30 PM, B11/13, except prayer meeting)  
洛城堂:「飛揚國語青年查經」(晚上七時半在 B11/13 課室,除每月月禱會外),聯繫 [faithful.young@cbcmgroups.org](mailto:faithful.young@cbcmgroups.org)
- Gaithersburg: Children’s and Teens’ Awana, 7:30 PM, at church  
蓋城堂:「兒童及少年 Awana」,週五晚上七時半,在教會
- Gaithersburg: Hua-Sheng Fellowship, 8 PM, in-person  
蓋城堂:「華盛團契」,晚上八時,實體聚會,聯繫 [huasheng@cbcmgroups.org](mailto:huasheng@cbcmgroups.org)

## **Pastoral & Church Staff Out and About This Week 牧者、教會同工行蹤**

- Mandarin Pastor, Edward Jiang, will be off from 1/28 to 1/29  
蔣淙昕國語牧師將於一月廿八至廿九日休假
- Church Administrator/Pastor Assistant, Ellen Lei, will be off from 1/28 to 2/11  
雷唐維麗教會行政/牧師助理將於一月廿八日至二月十一日休假
- Mandarin Pastor, Christopher Poh, will be off from 1/28 to 2/19  
蒲介珉國語牧師將於一月廿八日至二月十九日休假

## **GENERAL ANNOUNCEMENTS**

1. 2025 Church Directory Update: E-verification will be sent out on Monday 1/27 for CBCM attendees to review household updates (death of a love one, relocation, marriage, newborns, etc.).
  - (1) Verify and/or update your contact information by either: 1) submitting the “Church Directory Update” form ([www.cbcm.org](http://www.cbcm.org) > Resource > e-forms or request it from [church.directory@cbcm.org](mailto:church.directory@cbcm.org)), or 2) responding to the 1/27 e-verification email. If you haven’t received the email by 1/28, please contact the church office at 301-924-4855.
  - (2) If you are currently not on the church email listserv and wish to be added, please contact [church.directory@cbcm.org](mailto:church.directory@cbcm.org). Please finalize any changes by 2/16.
  - (3) Church Directory will be updated online and in the iCBCM app on your phones (please see flyer) and viewable only via valid member logins and passwords.
  - (4) A hard copy will be available in the end of February to each family unit whose name is in the Directory.
2. Welcome new members from Rockville English: Judah Kamadinata, George and Clotilde Thurman
3. Finance Dept.: 2024 Offering Receipts will be distributed today and next Sunday in the Visitors’ Lounge at CBCM-R and G-Campus.

4. Caring Dept.: (1) We will continue monthly donations to the current organizations in 2025. See details in insert. (2) Since mid-November, the CD has provided a total of \$26,265 to people with financial difficulties. (3) CD received news that there were churches burned down by the LA fire and is waiting for more information before sending financial help. If you have an urge to help those victims, you can send your support to a trusted church, Vintage Church, which SEND International is working with. Please click [here](#) for details. (4) We received emails of appreciation for our \$5,000 donation to Pastor Jagannath Banerjee of Kristalaya Mercy Mission to help struggling believers in the West Bengal flood in India late last year.
5. Missions Dept.: Mark your calendar: (1) March 2, 2025 first Global Focus Sunday in 2025. Other Global Focus Sundays are June 1st and October 5th. (2) March 22, 2025 – 2025 Missions Trip Participants REQUIRED Training. (3) 2025 Missions Trips: NOTE: Those who plan to serve among children on any missions trip must have experience in children’s ministry at CBCM. Contact Children’s Ministry for opportunities. Application deadline: 3 months before departure.

#	Date	Destination	Participants Needed	Note
1	4/15- 4/29 October (Dates to be announced)	Wurzburg, Germany	April: 2 needed (filled) October: To be announced	Preaching, teaching, counseling, visitation, building up of believers and leaders
2	5/19- 8/15	East Asia	2 needed	Elementary English Class, American and Chinese Sign Language classes, Deaf Culture and Deaf Church Believer Interactions
3	6/1- 6/15	Kyrgyzstan	Open	Cultural Camp among university students
4	7/14-7/18	Brooklyn, NY	14 max	Summer Splash. Team departs on 7/12 for Brooklyn for orientation and setup.
5	7/31- 8/11	Warsaw, Poland	6 needed	Team departs on 7/31, orientation, and children’s camp setup

More details are forthcoming! Contact [MissionsTrip@cbcmgroups.org](mailto:MissionsTrip@cbcmgroups.org).

6. Youth Dept.: Registration for the teens’ Winter Retreat (1/31-2/2) is now closed. Praise God for the 91 students and 33 volunteer staff between CBCM and the Rockville Evangelical Mission (REM) who have committed to go! The deadline for refund or registration transfer requests is this Tuesday, 1/28. Late sign-ups cannot be accepted due to limited lodging. For questions otherwise, contact [youth.retreats@cbcmgroups.org](mailto:youth.retreats@cbcmgroups.org).
7. Children’s Dept.: Save the dates for upcoming children's events - Please mark your calendar; co-workers needed! Contact: [children.dept.deacons@cbcm.org](mailto:children.dept.deacons@cbcm.org). More details to follow.
- Easter Egg Hunt - Rockville Campus: 4/12, Saturday afternoon  
(ages Toddler -11) - Gaithersburg Campus: 4/19, Saturday afternoon
  - VBS/Chinese School - Rockville Campus (ages 4-11): Kick-off Party 6/20, 6:30-8 PM;



VBS 6/23 - 6/27, 9 AM-12:30 PM.  
Chinese School will have a summer camp in the afternoon.  
- Gaithersburg Campus (ages 3-11): 8/4 - 8/8, 9 AM-12:30 PM.  
No Chinese School in the afternoon.

## ROCKVILLE ENGLISH (RE) MINISTRIES

1. Winter Quarter English Sunday School Classes: 9:45 AM, "An Introduction to Biblical Theology - God's One Big Story Through the Bible".
2. Teens' Sunday School Class (6th-12th grade): 9:45 AM, "Gospel of Mark"
3. The Young Families Fellowship meets at 9:45 AM in Room B15. We welcome all young family couples to join the class.
4. SALT Fellowship: All ladies are invited to breakfast, fellowship and prayer on Saturday, 2/8, 9:30 AM at the home of Susan Lu. Dr. Gerald Lui will be speaking on "Finding Support in Women's Stressful Lives". For more information or to be added to the SALT listserv, please contact Susan Lu [susan.lu@cbcmgroups.org](mailto:susan.lu@cbcmgroups.org).

## GAITHERSBURG ENGLISH (GE) MINISTRIES

1. Winter Quarter Adult Sunday School: "The Book of John", in Room 210
2. Teens' Sunday School: "His Story", 11:30 AM in Room 226
3. Children's Dept.:
  - (1) Toddlers to 5<sup>th</sup> grade: 10:00 AM, Room 224
  - (2) Children's Sunday School: 11:30 AM, Toddlers class in Room 101, K & Pre-K in Room 224, 1<sup>st</sup> to 5<sup>th</sup> Grade in Room 225.
4. Children's and Teens' Awana: Fridays, 7:30 PM, in-person
5. FGH Fellowship Lunch: Sunday 2/2, 12:30-2 PM in room 210, potluck style. Please contact Mee Lin Lee via WhatsApp or [fgf@cbcmgroups.org](mailto:fgf@cbcmgroups.org) for your dish selections.
6. GE February Gathering and Potluck Dinner: Saturday, 2/15, 4:30-7 PM, in Fellowship Hall. Contact Michael Lim [michael.lim@cbcmgroups.org](mailto:michael.lim@cbcmgroups.org) with any questions.

# iCBCM Church Directroy

## Protected By CBCM Password!!

2025 Church Directory Update: E-verification will be sent out on Monday 1/27 for CBCM attendees to review household updates (death of a love one, relocation, marriage, newborns, etc.).

- (1) Verify and/or update your contact information by either: 1) submitting the "Church Directory Update" form ([www.cbcm.org](http://www.cbcm.org) > Resource > e-forms or request it from [church.directory@cbcm.org](mailto:church.directory@cbcm.org)), or 2) responding to the 1/27 e-verification email. If you haven't received the email by 1/28, please contact the church office at 301-924-4855.
- (2) If you are currently not on the church email listserv and wish to be added, please contact [church.directory@cbcm.org](mailto:church.directory@cbcm.org). Please finalize any changes by 2/16.
- (3) Church Directory will be updated online and in the **iCBCM** app on your phones (please see flyer) and viewable only via valid member logins and passwords.
- (4) A hard copy will be available in the end of February to each family unit whose name is in the Directory.

### iCBCM

A tool for CBCM church members to look in the church directory in a more convenient way.

User's Manual:  Tutorial: 

iOS Devices

Android Devices



2025 教會通訊錄資料更新: 為經常到教會聚會而家庭資料有變動者(如辭逝, 搬遷、嫁娶、新生兒等)電子確認郵件將於 1/27 送出。

- (1) 如您需更新資料, 可於教會網站下載 [www.cbcm.org](http://www.cbcm.org) → 資源寶庫 → 表單下載 → [教會「通訊錄」修訂資料表], 並電郵 [church.directory@cbcm.org](mailto:church.directory@cbcm.org), 或依照已寄給大家的電郵指示, 自行修改. 若 1/28 仍沒收到, 請聯絡教會辦公室 301-924-4855.
- (2) 如您不在教會電郵清單但希望加入者, 請洽 [church.directory@cbcm.org](mailto:church.directory@cbcm.org). 截止日期為 2/16.
- (3) 教會通訊錄將在網上或是使用手機應用程式 **iCBCM** 更新, 可透過密碼登入查看.
- (4) 通訊錄預計 2 月底出版, 通訊錄上有名字的單位可拿到一本通訊錄.

# 2025





馬利蘭中華聖經教會  
蓋城堂



誠邀你和家人一同參加新年  
春節慶祝晚宴! 一起包餃子、  
唱歌、玩娛樂遊戲, 歡迎帶  
來你的家鄉特色美食!

時間: 二月一日 下午4時 - 9時

地址: 18757 N. Frederick Ave.

Gaithersburg, MD 20879

聯絡人: 張愛軍弟兄

[aijun.zhang@cbcmgroups.org](mailto:aijun.zhang@cbcmgroups.org)



**HAPPY**  
**CHINESE**  
NEW YEAR  
**2025**

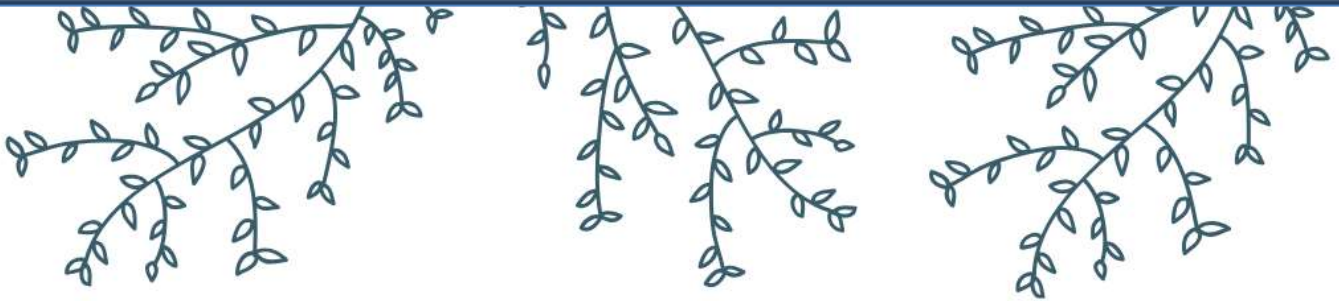


## Caring Department 2025 Monthly Donation Organizations

- LAUREL PREGNACY CENTER - \$500: provides free services to those seeking physical, mental, and emotional support during pregnancy, or after miscarriage or abortion. (No abortion procedures are provided).
- SHADY GROVE PREGNACY CENTER - \$500: provides care for those experiencing crisis during pregnancy.
- BARNABAS AID - \$1,000: helps Christians in minority areas who are discriminated against and persecuted.
- HARVEST USA - \$1,000: provides believers and churches with biblical teaching on sex, sexual orientation, and gender, and provides assistance to those who are impacted in these areas.
- FULLNESS IN CHRIST FELLOWSHIP (FICF) - \$500: provides counseling, education, and social and job skills training to females to combat the activities of human and sex trafficking in Cambodia.
- SHEPHERD'S TABLE - \$1,000: provides food and social services to food-insecure, homeless and impoverished families in Montgomery and Prince George's counties.

## 關懷部 2025 年每月支助的機構

- LAUREL 孕育中心 - \$500, 該單位為懷孕期間尋求身體、精神、情感, 並因流產及墮胎之後所提供的免費服務。(不提供流產服務程序)
- Shady Grove 孕育中心 - \$500, 該單位為懷孕期間遭遇危機者提供關懷服務。
- 巴拿巴援助 - \$1,000, 該單位幫助基督徒在少數群體的地區裡, 因信仰而遭受歧視和迫害的人。
- HARVEST USA - \$1,000, 該機構的事工使命是以印刷刊物、電子文件和視頻等媒介來針對信徒和教會提供在性、性傾向、和性別上合乎聖經的性觀念教導, 並為在這些方面受到衝擊的人提供幫助。
- 基督豐榮團契 - \$500, 該團契藉輔導治療、教育、和社交與工作技能培訓等方式對抗柬埔寨裡面的人口和性販賣組織的活動。
- 牧羊人的餐桌 - \$1,000, 該機構對蒙哥馬利郡和喬治王子郡內糧食短缺、無家可歸和貧戶提供食物和社工服務。



CBCM TEENS GROUP  
WINTER RETREAT

# ABIDE



1/31 - 2/2, 2025

@ Skycroft Conference Center

Register here:

<http://tinyurl.com/tgwr25>





## Prayer & Thanksgiving 禱告感恩

David & Elizabeth – Interserve USA 大衛夫婦—美國國際事工  
Ministry: Serving Refugees in the Middle East 事奉: 服事中東的難民

“There is still a lot of uncertainty for refugees in the region as they decide whether to stay in the camps, with the threat of health and utility services halting, especially during the cold winter season, or to return to their homeland where homes and infrastructure have yet to be rebuilt and ISIS still remains.”

- ◆ Pray for Syria in this latest upheaval. We have friends whose families are affected. Thankfully, the situation does not affect our safety or security. There is a lot of uncertainty regarding how competing groups will handle the power void, and what this means for Syrians in the country and Syrian refugees living elsewhere.
- ◆ Continue to pray for the work at the refugee health clinic as we increase our health education and training opportunities while focusing on a more holistic, development minded approach. More than the medical work, it is navigating the social and emotional complexities that is exhausting, but rewarding to David.
- ◆ Pray for deepening of relationships and broadening of conversations with locals in the city and in the refugee camp as we progress in language learning.

「本地區的難民仍然面對著許多不確定性，他們要決定是否繼續留在難民營中，因為在這寒冷的冬季，營裏的衛生、公用設施和服務有可能被停掉；如果返回自己的家園，原有的基礎設施卻尚未重建，伊斯蘭國的恐怖分子也依然存在。」

- ◆ 請為最近敘利亞所發生的動盪禱告，我們朋友的家人受到影響。感謝神，這種情況目前還不會影響到我們的安全。在政府權力真空之際，不知道那些互相競爭的武力團體會有何舉動，也不知道他們的行動對敘利亞境內的居民和逃到境外的難民又會帶來什麼影響。
- ◆ 請繼續為難民健康診所的事工禱告，目前的狀況為我們增加了許多健康教育和培訓的機會，我們也更注重全人發展的模式；除了醫療工作之外，我們也試著處理複雜的社會和情感問題。這些額外的負擔著實讓大衛筋疲力盡，然而對他而言，又是很有價值的。
- ◆ 隨著我們在語言學習方面的進步，求神讓我們能加深與本地居民和難民的關係，也能與他們有更多、更深入的話題。

## Prayer For The Persecuted Church 為被逼迫的教會禱告 - [www.barnabasaid.org](http://www.barnabasaid.org)

Those who leave Hinduism to follow Christ in Nepal are viewed as having abandoned not just their religion but also their family, culture and community. They may face persecution, especially if they were high-caste. Christians may find themselves facing discrimination, for example being barred from public jobs. Pray that the Lord will fill the Nepali Christians with overflowing peace and joy.

那些離開印度教來跟隨基督的尼泊爾人是被看為離棄他們宗教、家庭、文化和社群的人。他們可能遭受到迫害，對那些屬高種姓階級的基督徒尤其明顯。基督徒是被歧視的，包括被禁止得到公職工作。請禱告求神加添尼泊爾基督徒滿溢的平安和喜樂。

## 冬季主日學班 Winter Quarter Sunday School Classes

洛城堂 Rockville	粵語 國語 11:30am	粵 (一): 末世忠僕傳主道 - 啓示錄品讀 - B11/13 粵 (二): 人算甚麼 - 有關人與罪的教義 - B15 粵 (三): 慕道班 - B14	國 (一): 約書亞記 - B09 國 (二): 約翰福音 - B07 國 (三): 救恩論 - B03/05 國 (四): 主日福音班 - B10 國 (五): 主日慕道班 - B06	
	English 9:45am	1. An Introduction to Biblical Theology - God's One Big Story Through the Bible - B11/13 2. Young Family Fellowship - B15	Youth 9:45am	Gospel of Mark • Middle Schoolers - B03/05 • High Schoolers - B08
蓋城堂 Gaithersburg	國語 10:00am	(一) 但以理書- 交誼廳 (二) 慕道班 - R225		
	English/ Youth 11:30am	The Book of John for Adults - R210	His Story for Teens - R225	

### 上週網路敬拜人數 Online Worship Attendance Last Week

國語	粵語	Eng./Youth	Children	蓋城堂 CBCM-G	
203	111	128	--	54 (M) 11 (E)	-- (C)

### 上週網路主日學人數 Online Sunday School Attendance Last Week

50	57	28 (Eng.)	-- (Youth)	--	30 (M) -- (E)	-- (Y) -- (C)
----	----	-----------	------------	----	---------------	---------------

### 上週主日奉獻 Offerings Last Week

經常 General Fund	差傳 Missions Fund	建堂 Building Fund	關懷 Caring Fund	神學獎學金 Scholarship Fund
--------------------	---------------------	---------------------	-------------------	---------------------------

Due to the inclement weather, the offering totals for 1/19 and 1/26 will be combined.  
因著上主日天氣不佳要在網上聚會的緣故, 奉獻數字將與下周的一同公佈。

Senior Pastor: Rev. Hugo Cheng  
Cantonese Pastor: Rev. Vitus Cheng  
English Pastor: Rev. Steve Eatmon  
English Pastor: Rev. John Tung  
Mandarin Pastor: Rev. Edward Jiang  
Mandarin Pastor: Rev. Christopher Poh  
Global Outreach & Women's Minister: Isabel Lee  
Youth Director: Dorothy Lau  
English Minister: Felix Chiu

主任牧師: 程德鵬牧師  
粵語牧師: 鄭會淦牧師  
英語牧師: 伊明恩牧師  
英語牧師: 董溥強牧師  
國語牧師: 蔣淙昕牧師  
國語牧師: 蒲介珉牧師  
全球外展與婦女事工: 李貝文傳道  
少年事工: 劉欣寧主任  
英語傳道: 丘沛毅傳道